

Evidence-based “Anti-aging Medicine” by Micro-sampling/analysis System

(Assoc. Prof. Atsushi Taga, punk@phar.kindai.ac.jp)

Research Area

1. Production of MonoTrap.
2. Development of intelligent Performance Liquid Chromatography (iPLC) using a monolithic column.
3. Biological monitoring of human samples.

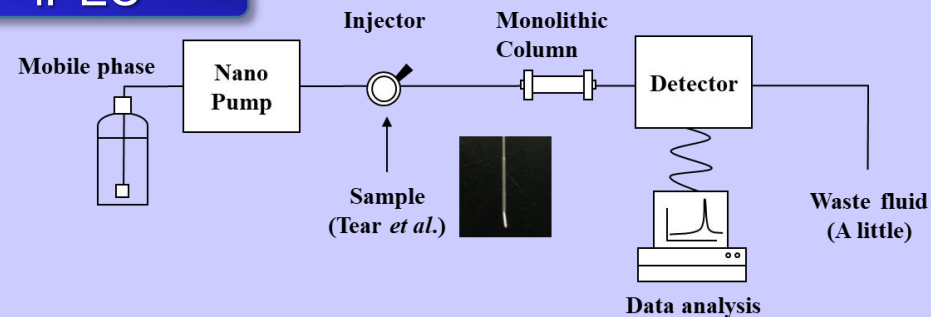
MonoTrap

Collection of Sample
by using a MonoTrap



Absorption of biological samples
(Tear, Saliva, Sweat *et al.*)

iPLC



Biological monitoring



Evaluation of skin condition

Recent Activities

- Proteomic profile of the lens in a streptozotocin-induced diabetic rat model using shotgun proteomics. *Biomed Rep.*, in press
- Identification of aldolase A as a potential diagnostic biomarker for colorectal cancer based on proteomic analysis using formalin-fixed paraffin-embedded tissue. *Tumor Biol.*, 37, 13595–13606, 2016
- Optimization of method to extract collagen from “Emperor” tissue of soft-shelled turtles. *J Oleo Sci.*, 65, 169–175, 2016