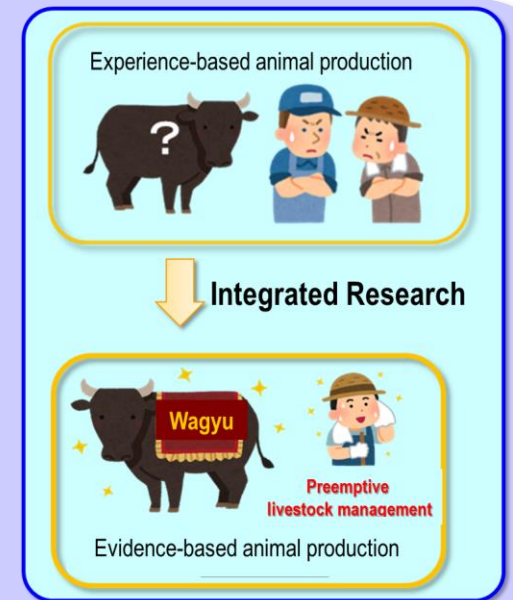


Integrated Research for Evidence-based Animal Production

(Prof. Kazuya MATSUMOTO, kazum@waka.kindai.ac.jp)

Research Area

1. Establishment of effective genetic and epigenetic markers for the estimation of meat quality
2. Development of technology to manage intestinal flora and metabolism to efficiently produce high quality meat.
3. Reliable evaluation technique to give stable evaluation to aging meat



Recent Activities

- Identification and characterization of an oocyte factor required for development of porcine nuclear transfer embryos. Proc Natl Acad Sci U S A. 2011, 108(17): 7040-7045.
- Large-scale proteomic analysis of Japanese Black cattle : Part III. Identification of protein biomarker candidates for assessment of carcass traits and meat quality characteristics. Nihon Chikusan Gakkaiho 2015, 86(2): 141-152.