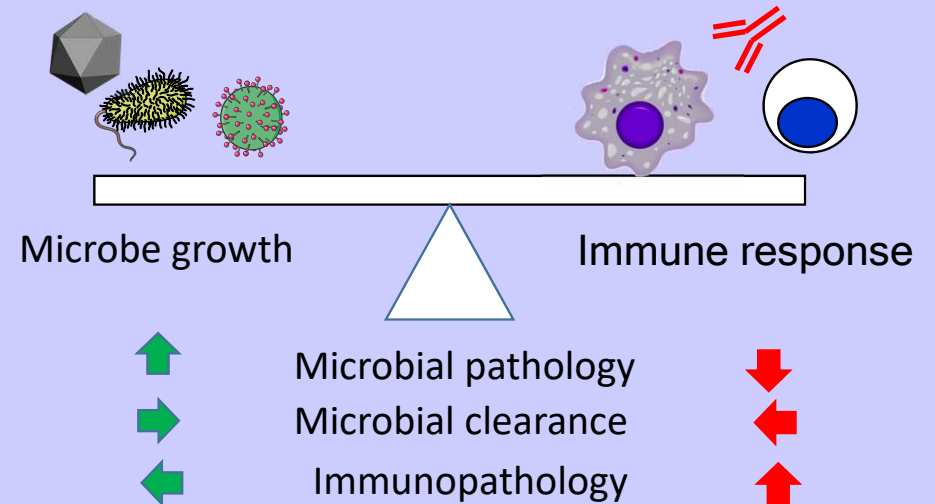


Microbial and Immune Balance Determines Health and Disease Conditions

(Prof. Ikuo TSUNODA, itsunoda@med.kindai.ac.jp)

Research Area

1. Viral pathology vs. immunopathology of myocarditis/myositis
2. Microbes vs. neuroimmunology in neurological diseases
3. Microbiota vs. mucosal immunity in health and diseases



Recent Activities

- Curdlan, microbial β -glucan, has contrasting effects on autoimmune and viral models of multiple sclerosis. *Front Cell Infect Microbiol* 12: 805302, 2022
- Bioinformatics analysis of gut microbiota and CNS transcriptome in virus-induced acute myelitis and chronic inflammatory demyelination. *Front Immunol* 11: 1138, 2020