

# Novel Brain Tumor Immunotherapy Research Core

(Associate Prof. Mitsugu Fujita, mfujita47@med.kindai.ac.jp)

## Research Area

1. B7-family Immune Checkpoint Molecules
2. Brain Tumor Immune Microenvironment and Gut-Brain Axis
3. Novel Brain Tumor CAR-T Cell Therapy
4. Novel AI Pathology Analysis Algorithm

Fig 1: AI pathology analysis

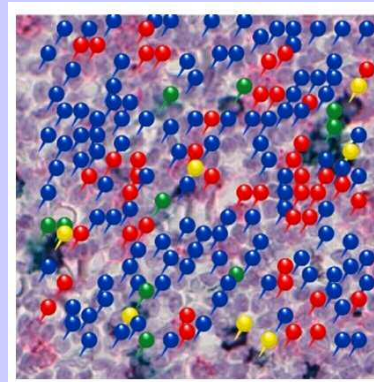
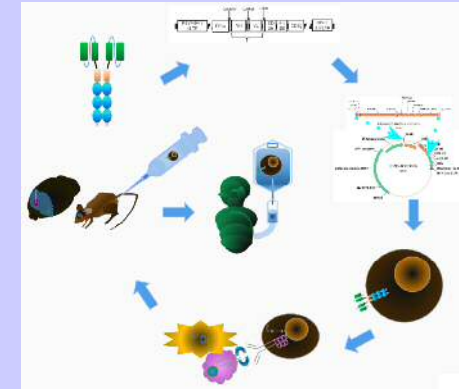


Fig 2: CAR-T development Process



## Recent Activities

- Abe T, Fujita M, et al. *Anticancer Res.* 43:3755 (2023): AI pathology-related research
- Tatebayashi K, Fujita M, et al. *Cancers.* 15:3800 (2023): Clinical research for glioma (brain tumor)
- Moyama C, Fujita M, et al. *Am J Cancer Res.* 12:1129 (2022): Basic research for tumor microenvironment